

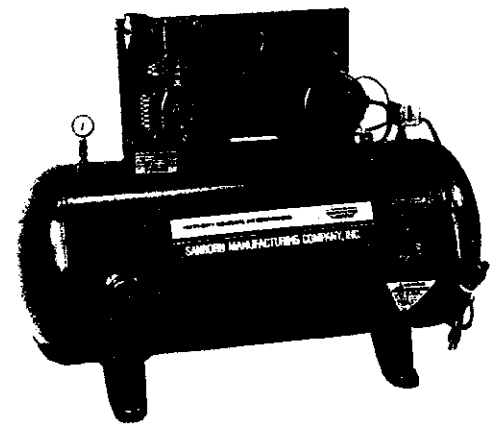


OPERATOR'S MANUAL

- OPERATION
- MAINTENANCE
- REPAIR PARTS

MODELS:

- 400A30APS
- 400A30AVS
- 400A30AHS
- 400A60VS
- 400A60HS
- 143A400-30CP
- 143A400-30CV
- 143A400-30CH
- 143A400-60CV
- 143A400-60CH
- 500A60VS
- 500A60HS
- 143A500-60CV
- 143A500-60CH



40 PSI
90 PSI

**TWIN CYLINDER,
ELECTRIC MOTOR
AIR COMPRESSOR**

CAUTION:

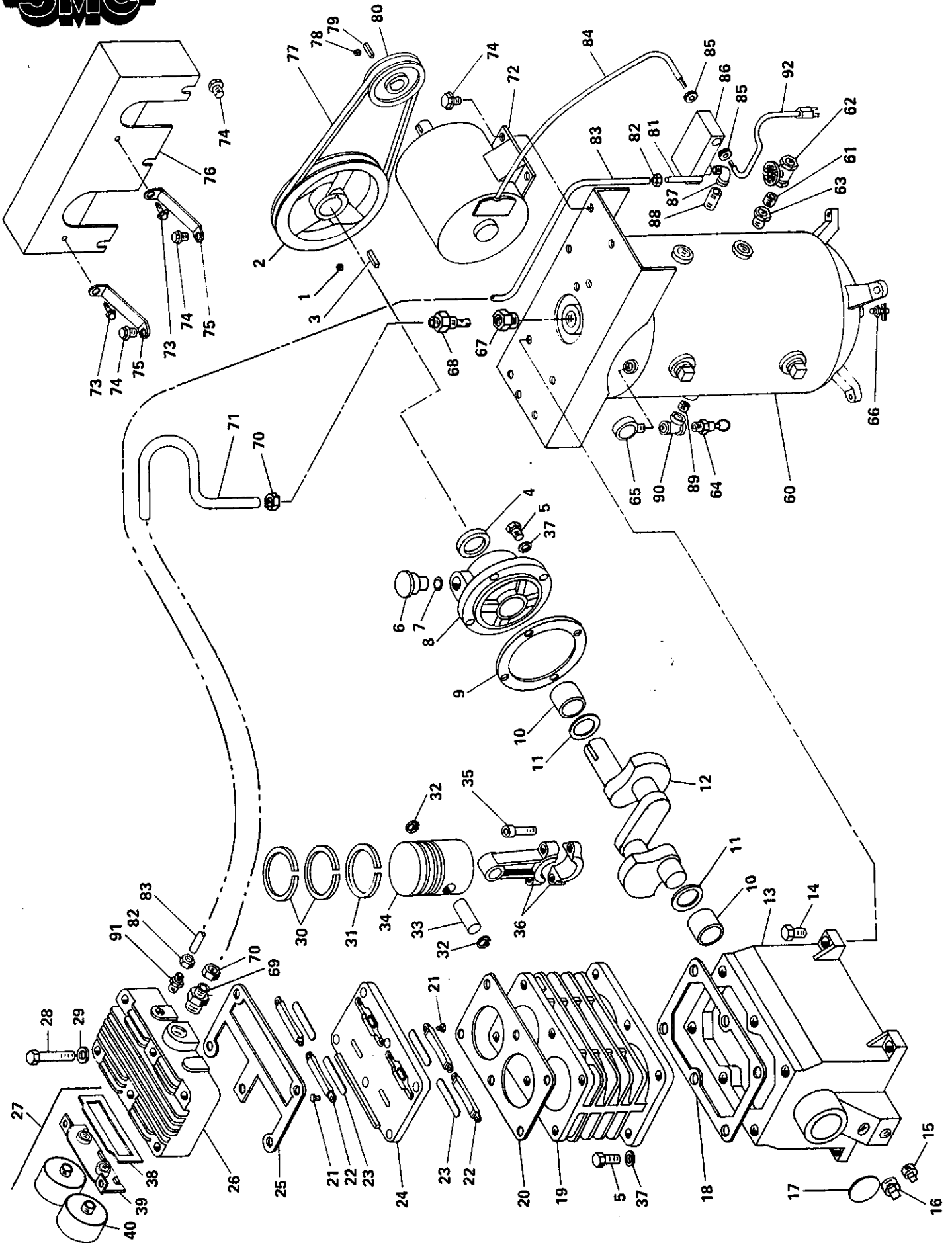
Read the operator's manual carefully before attempting to operate or service this unit. FAILURE TO COMPLY WITH INSTRUCTIONS COULD RESULT IN PERSONAL INJURY AND/OR PROPERTY DAMAGE. SMC air compressors are precision built from the finest materials and with proper care and maintenance will perform efficiently.

Please record the model and serial number and the date the unit was purchased in the spaces below. The model and serial numbers are located on the model plate below the pump. Retain this manual with these numbers for future reference.

Model No. _____

Serial No. _____

Date Purchased _____



PARTS LIST



REF. NO.	PART NO.	DESCRIPTION	QTY.
COMPRESSOR PUMP REPLACEMENT PARTS			
1	061-0002	Set Screw, 5/16"	1
2	044-0014	10" O.D. Flywheel, B-groove	1
3	146-0001	Key, 3/16" x 1" long	1
4	046-0009	Oil seal	1
5	059-0001	Bolt, 5/16" - 18 x 3/4" long	10
6	056-0002	Crankcase breather	1
7	054-0010	O-ring	1
8	045-0010	Bearing carrier	1
9	046-0005	Bearing carrier gasket	1
10	051-0003	Sleeve bearing	2
11	060-0001	Fiber washer	2
12	053-0001	Crankshaft	1
13	049-0005	Crankcase	1
14	059-0010	Bolt, 5/16" - 18 x 1-1/4" long	4
15	062-0002	1/8" Oil drain plug	1
16	062-0004	3/8" Oil fill plug	1
17	062-0003	Expansion plug	1
18	046-0006	Cylinder gasket	1
19	050-0008	Cylinder	1
20	046-0013	Head gasket	1
21	061-0035	No. 6-32 stickscrew 1/4" long	8
22	155-0021	Stop bar	4
23	155-0020	Flex-Leaf valve	4
24	043-0073	Valve plate	1
25	046-0014	Valve plate gasket	1
26	042-0007	Head	1
27	019-0054	Complete filter assembly	1
28	059-0026	Bolt, 3/8" - 16 x 2-1/2" long	6
29	060-0014	Gasket washer	1
30	054-0019	Compression ring	4
31	054-0020	Oil control ring	2
32	054-0018	Wrist pin retaining ring	4
33	052-0004	Wrist pin	2
34	048-0008	Piston, 2-5/8"	2
35	059-0004	Bolt, 5/16" - 18 x 1-1/4" (socket head)	4
36	047-0008	Connecting rod	2
37	103-0011	Bolt seal, 5/16" I.D.	10
FILTER ASSEMBLY			
27	019-0054	Complete filter assembly	1
38	046-0148	Gasket	1
39	019-0050	Bracket	1
40	019-0049	Filter Canister	2
	019-0059	Replacement Filter Element use with above Canister (019-0049)	2

ASSEMBLIES & MISCELLANEOUS PARTS		
040-0056	Pump Assembly, model 143 SMC	
165-0014	Overhaul Kit, (includes gasket set, filters, valves with screws and ring set)	
054-0067	Complete set of rings	
046-0070	Complete set of gaskets	
043-0074	Valve plate assembly (ref. nos. 20-25)	
048-0024	Piston assembly (ref. nos. 30-34)	
042-0017	Cylinder head assembly (ref. nos. 20-27 & 29)	
012-0004	Hose, 3/8" x 15' (not shown)	
038-0002	Air chuck (on end of hose)	
018-0007	Air compressor oil, SAE 30 (recommended for use above 20° F.) 1 quart	
018-0008	Air compressor oil, SAE 10 (recommended for use below 20° F.) 1 quart	

REPLACEMENT PARTS, PORTABLE MODELS		
400A30APS, 143A400-30CP		
PART NO.	DESCRIPTION	QTY.
153-0007	30 gallon ASME Portable tank	1
095-0001	Wheel, 10" x 1.75	2
033-0002	Hubcap, 5/8"	2
112-0002	Handle	1
094-0002	Vibration isolator	1

REF. NO.	PART NO.	DESCRIPTION	QTY.
TANK ASSEMBLY REPLACEMENT PARTS			
60	153-0005	30 gallon ASME Vertical tank for Vertical models	1
60	153-0008	30 gallon ASME Horizontal tank for Horizontal models	1
60	021-0050	60 gallon ASME Vertical tank for Vertical models	1
60	021-0051	60 gallon ASME Horizontal tank for Horizontal models	1
61	065-0024	Nipple, 3/8" x 1" long	1
62	073-0003	Gate valve, 3/8"	1
63	063-0002	Bushing, 1/2" x 3/8"	1
64	136-0004	125 lb. ASME Pressure relief valve for CSA models	1
64	136-0005	150 lb. ASME Pressure relief valve for Domestic models	1
65	032-0004	200 PSI Air pressure gauge with 1/4" outlet on bottom	1
65	032-0002	200 PSI Air pressure gauge with 1/4" outlet on back	1
66	072-0001	1/4" NPT petcock (tank drain)	1
67	063-0021	Bushing, 3/4" x 1/2"	1
68	031-0028	1/2" NPT O.D. x 1/2" I.D. submergable check valve	1
69	068-0009	1/2" NPT x 1/2" O.D. tube, male connector	1
70	058-0016	1/2" compression nut & sleeve	2
71	145-0026	Transfer tube, 1/2" O.D.	1
72	160-0015	Motor, 4 H.P.	1
72	160-0018	Motor, 5 H.P. (1 phase)	1
72	160-0019	Motor, 5 H.P. (3 phase)	1
73	061-0005	No. 10 sheet metal screw	2
74	059-0012	Lock bolt, 5/16" - 18 x 1/2"	9
75	114-0006	Belt guard bracket	2
76	142-0012	Belt guard assembly for CSA models	1
76	142-0003	Belt guard assembly for Domestic models	1
77	008-0011	V-belt, 5L490, for 4 H.P. models	1
77	008-0003	V-belt, 5L500, for 5 H.P. models	1
78	061-0006	Set screw, 5/16" - 18 x 3/8"	1
79	146-0001	Key, 3/16" x 1" long	1
80	006-0050	Pulley, 3" O.D. x 5/8" bore for 4 H.P. models	1
80	006-0023	Pulley, 3-1/4" O.D. x 5/8" bore for 5 H.P. models	1
81	136-0013	Pressure switch bleeder	1
82	058-0017	1/4" compression nut & sleeve	2
83	145-0053	Bleeder tube, 1/4" O.D. for Vertical models	1
83	145-0052	Bleeder tube, 1/4" O.D. for Portable and Horizontal models	1
84	026-0005	Interconnecting cord 14/2 x 27"	1
85	093-0001	Rubber grommet	1
85	071-0002	Strain relief connector	2
86	034-0026	Pressure switch for CSA models	1
86	034-0032	Pressure switch for Domestic models	1
87	064-0022	Elbow, 1/4" NPT 90° street	1
88	065-0004	Nipple, 1/4" x 2" long	1
89	065-0022	Nipple, 1/4" x 1" long	1
90	069-0004	1/4" tee	1
91	068-0002	1/8" NPT x 1/4" O.D. tube male connector	1
92	026-0011	Power supply cord, 230 volt, 15 amp, for Domestic models	1
92	026-0038	Power supply cord, 230 volt, 15 amp, for CSA models	1