

# SANBORN

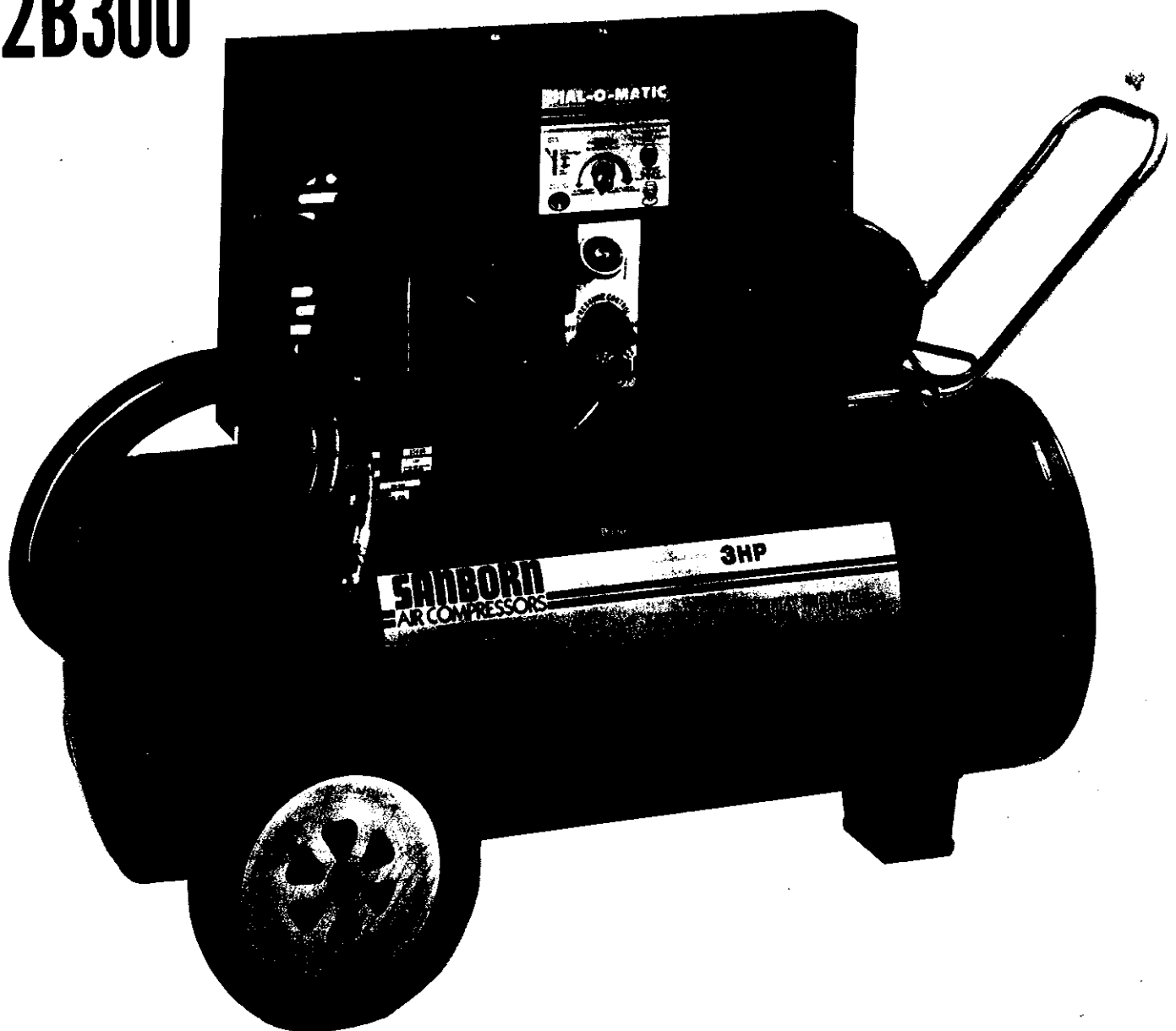
## AIR COMPRESSORS

## PARTS MANUAL

# PORTABLE

## TWIN CYLINDER ELECTRIC SERIES

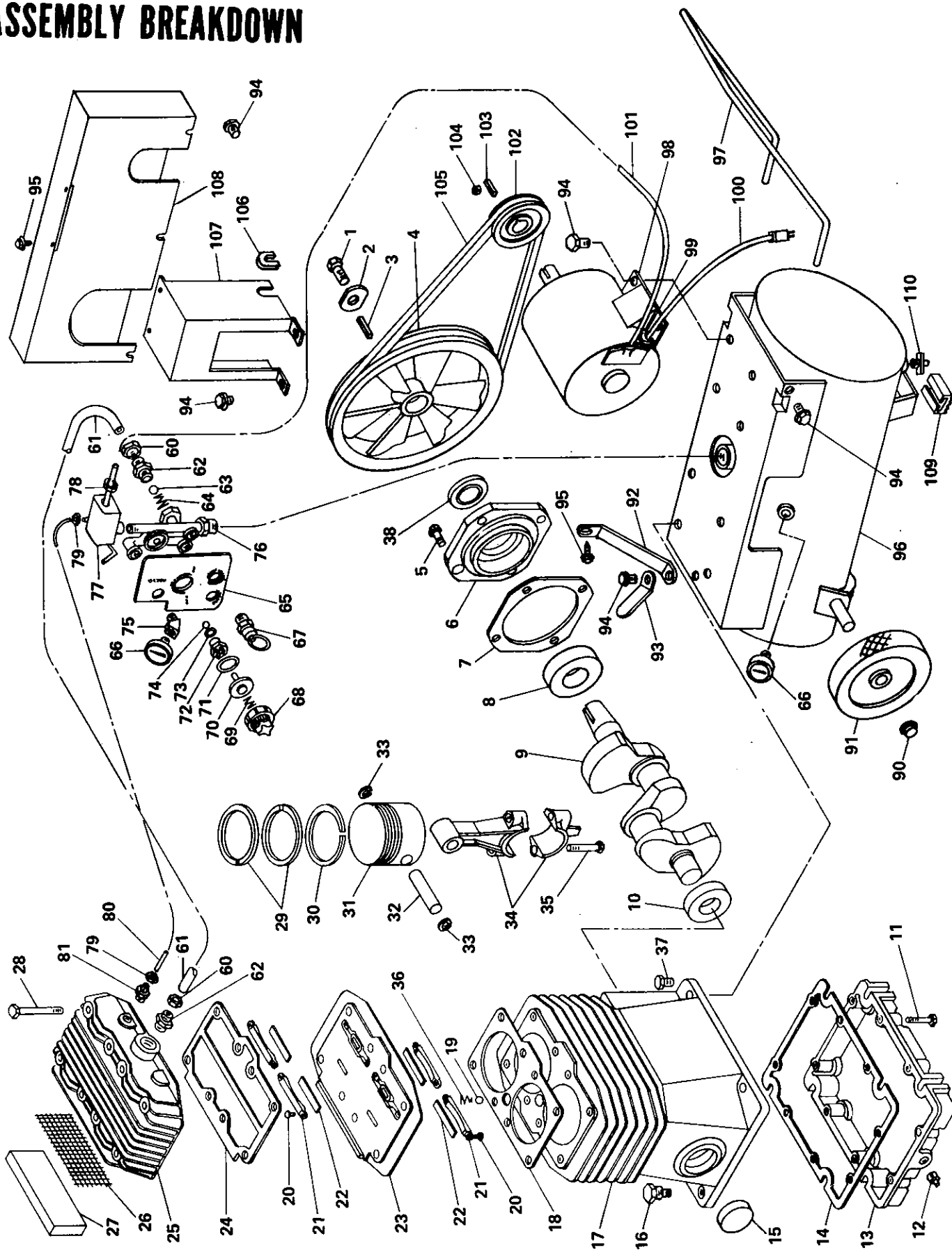
# 112B300



### CAUTION:

Read the operator's manual carefully before attempting to operate or service this unit! FAILURE TO COMPLY WITH INSTRUCTIONS COULD RESULT IN: VOIDING OF YOUR WARRANTY, PERSONAL INJURY, AND/OR PROPERTY DAMAGE! Sanborn air compressors are precision built from the finest materials and with proper care and maintenance will perform efficiently.

## ASSEMBLY BREAKDOWN



## PARTS LIST

COMPRESSOR PUMP REPLACEMENT PARTS			
ITEM	PART NO.	DESCRIPTION	QTY.
1	059-0002	Bolt, 5/16" NC x 1" long	1
2	060-0053	Flywheel washer	1
3	146-0001	Key, 3/16" SQ x 1" long	1
4	044-0026	Flywheel, 10" O.D., A-width	1
5	059-0143	Bolt, 5/16" NC x 7/8" long	4
6	045-0043	Bearing carrier	1
7	046-0149	Bearing carrier gasket	1
8	051-0043	Open bearing	1
9	053-0041	Crankshaft	1
10	051-0013	Open bearing	1
11	059-0145	Bolt, 1/4" NC x 1-1/4" long	8
12	062-0002	Pipe plug, 1/8" NPT	1
13	077-0065	Crankcase base	1
14	046-0150	Crankcase base gasket	1
15	062-0043	Expansion plug, 1-3/4" diameter	1
16	056-0019	Dipstick	1
17	049-0023	Crankcase	1
18	046-0152	Cylinder gasket	1
19	079-0014	Ball seat, 3/8" diameter	1
20	061-0038	Screw, # 6 x 5/16"	8
21	155-0024	Stop bar	4
22	155-0020	Flex leaf valve	4
23	043-0105	Valve plate	1
24	046-0151	Head gasket	1
25	042-0048	Head	1
26	118-0017	Inlet filter screen	1
27	019-0052	Inlet filter	1
28	059-0144	Bolt, 5/16" NC x 2-1/2" long	8
29	054-0090	Compression ring 2-3/4"	4
30	054-0115	Oil control ring 2-3/4"	2
31	048-0046	Piston 2-3/4" O.D.	2
32	052-0024	Wrist pin	2
33	054-0110	Wrist pin retaining ring	4
34	047-0046	Connecting rod	2
35	059-0142	Bolt, 5/16" NC x 1-1/2" long	4
36	055-0047	Breather spring	1
37	059-0146	Bolt, 5/16" NC x 2-1/4" long	4
38	046-0161	Oil seal	1

DIAL-O-MATIC REPLACEMENT PARTS			
ITEM	PART NO.	DESCRIPTION	QTY.
60	058-0016	1/2" compression nut & sleeve	2
61	145-0028	Transfer tube, 1/2" O.D.	1
62	068-0009	Male connector, 1/2" NPT to 1/2" O.D. tube	2
63	079-0002	Ball seat	1
64	055-0007	Spring	1
65	106-0001	Face plate	1
66	032-0001	Gauge, 170 PSI 1/8" back connect	2
66	032-0005	Gauge, 160 PSI, 1/4" back connect (30 gal. ASME models)	1
67	136-0012	130 lb. Pressure relief valve for non-code Domestic models	1
67	136-0022	130 lb. ASME Pressure relief valve for certified Domestic models	1
67	136-0024	110 lb. ASME Pressure relief valve for all CSA models	1
68	137-0001	Knob assembly	1
69	055-0005	Regulator spring	1
70	078-0001	Regulator piston	1
71	054-0007	O-ring	1
72	105-0002	Guide	1
73	054-0040	O-ring	1
74	079-0005	Ball, 1/4"	1
75	064-0028	1/8" NPT 45° brass street elbow	1
76	041-0003	Manifold	1
77	034-0038	Pressure switch (Domestic)	1
77	034-0025	Pressure switch (LA)	1
77	034-0012	Pressure switch (CSA)	1
78	093-0001	Rubber grommet	1
78	071-0002	Strain relief connector (CSA, LA)	1
79	058-0017	1/4" compression nut & sleeve	2
80	145-0008	Bleeder tube, 1/4" O.D.	1
81	068-0002	Male connector, 1/8" NPT to 1/4" O.D. tube	1

TANK ASSEMBLY REPLACEMENT PARTS			
ITEM	PART NO.	DESCRIPTION	QTY.
90	033-0001	Hub cap, 1/2" (10, 14 gallon ASME & non-code)	2
90	033-0002	Hub cap, 5/8" (20, 22 & 30 gallon portables)	2
91	095-0010	Wheel, 8" x 1.75" (10, 14 gallon ASME & non-code)	2
91	095-0001	Wheel, 10" x 1.75" (20, 22 & 30 gallon portables)	2
92	114-0006	Belt guard bracket	1
93	114-0005	Hose bracket	1
94	059-0012	Lock bolt, 5/16"- 18 x 1/2" long	11
95	061-0005	No. 10 sheet metal screw	3
96	127-0023	10 gallon portable tank	1
96	154-0005	14 gallon ASME portable tank	1
96	128-0015	14 gallon non-code portable tank	1
96	152-0017	20 gallon ASME portable tank	1
96	130-0014	22 gallon portable tank	1
96	131-0009	30 gallon non-code portable tank	1
96	153-0023	30 gallon ASME portable tank	1
96	131-0003	30 gallon non-code tank (stationary horizontal)	1
96	153-0003	30 gallon ASME tank (stationary horizontal)	1
96	131-0011	30 gallon non-code tank (stationary vertical)	1
96	021-0082	30 gallon ASME tank (stationary vertical)	1
97	112-0002	Handle	1
98	160-0006	3 H.P. motor	1
99	071-0002	Strain relief connector	1
100	026-0011	Power cord, 14/3 x 6' long 230 volt, 15 amp (Domestic)	1
100	026-0038	Power cord, 14/3 x 6' long 230 volt, 15 amp (CSA)	1
101	026-0013	Interconnecting cord, 14/2 x 34"(CSA)	1
101	026-0074	Interconnecting cord, 14/2 x 34" (Domestic)	1
102	006-0013	Pulley, 3.05" O.D. A-width	1
103	146-0016	Key, 3/16" x 1" long	1
104	061-0006	Set screw, 5/16" - 18 x 3/8"	1
105	007-0012	V-belt, 4L-490, A-width	1
106	093-0003	Grommet strip	3
107	117-0002	Manifold cover	1
108	142-0003	Belt guard (Domestic)	1
108	142-0012	Belt guard (CSA, LA)	1
109	094-0002	Vibration isolator	1
110	072-0001	1/4" Petcock (tank drain)	1

ASSEMBLIES AND MISCELLANEOUS PARTS	
PART NO.	DESCRIPTION
040-0086	Pump Assembly Sanborn 130 Electric driven with 10" flywheel
165-0050	Overhaul kit (includes gasket and ring sets, valves w/screws and filter element)
054-0112	Complete ring set
046-0159	Complete gasket set
043-0089	Valve plate assembly (items 18 & 20 - 24)
012-0004	Hose, 3/8" x 15'
038-0002	Air chuck
018-0007	Air compressor oil, SAE 30 1 qt.
018-0008	Air compressor oil, SAE 10 1 qt.