

OPERATORS INSTRUCTION MANUAL AND PARTS LIST

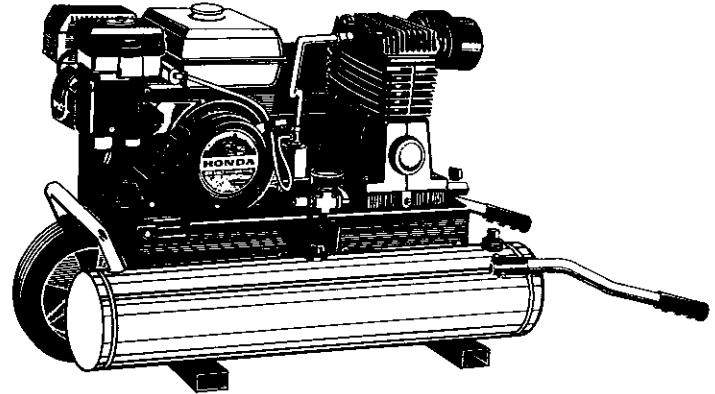
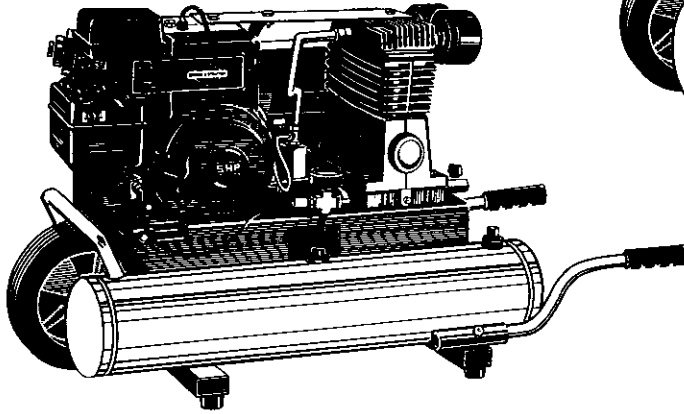
Form 200-1740 Rev. A

3-90

CONSTRUCTION

TWIN CYLINDER GASOLINE
165 PUMP 5 HORSEPOWER

MODEL:
165TG51 SERIES



SPECIFICATION CHART

HORSEPOWER	5	5
MODEL NUMBER	165TG51H-8	165TG51B-8
GASOLINE ENGINE	Honda	Briggs & Stratton
AIR RECEIVER (TANK) CAPACITY	8 Gallons	8 Gallons
SCFM @ 40 PSI	10.7	10.7
SCFM @ 90 PSI	9.3	9.3
APPROXIMATE KICK-IN PRESSURE	90	90
APPROXIMATE KICK-OUT PRESSURE	120	120

In the event you should have a question, or a concern, with the air compressor, **DO NOT** return it to the store where you purchased it. Most problems and concerns can be taken care of on the telephone!

Simply call the appropriate number listed below and discuss the concern with our trained Customer Service Department.

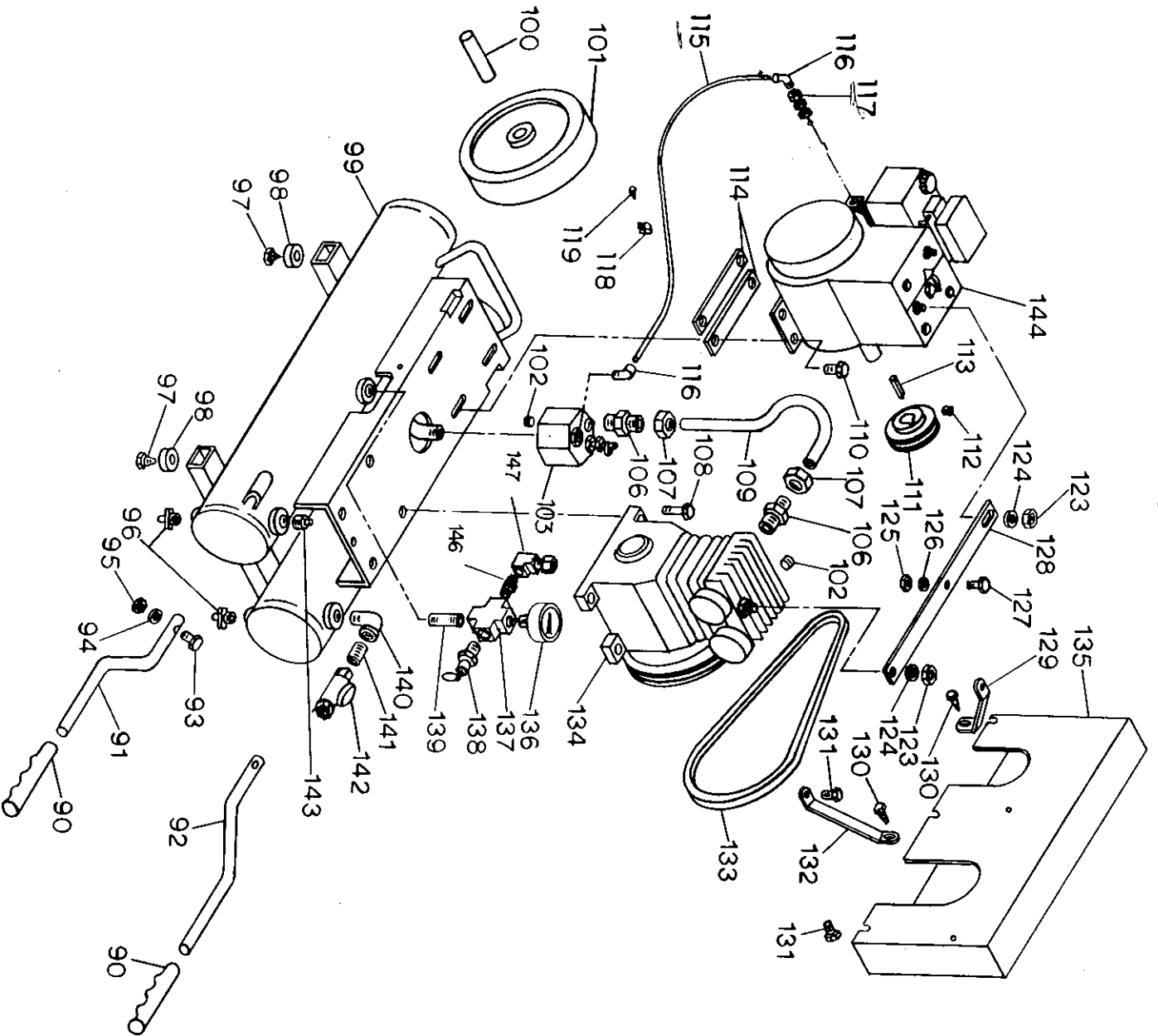
(800) 544-5145 (Toll Free)
(204) 947-1754 (In Canada)

Should you not be able to reach us at the above numbers, please check the Service Center Listing included with your instruction manual and call the Service Center nearest you for assistance.

CAUTION:

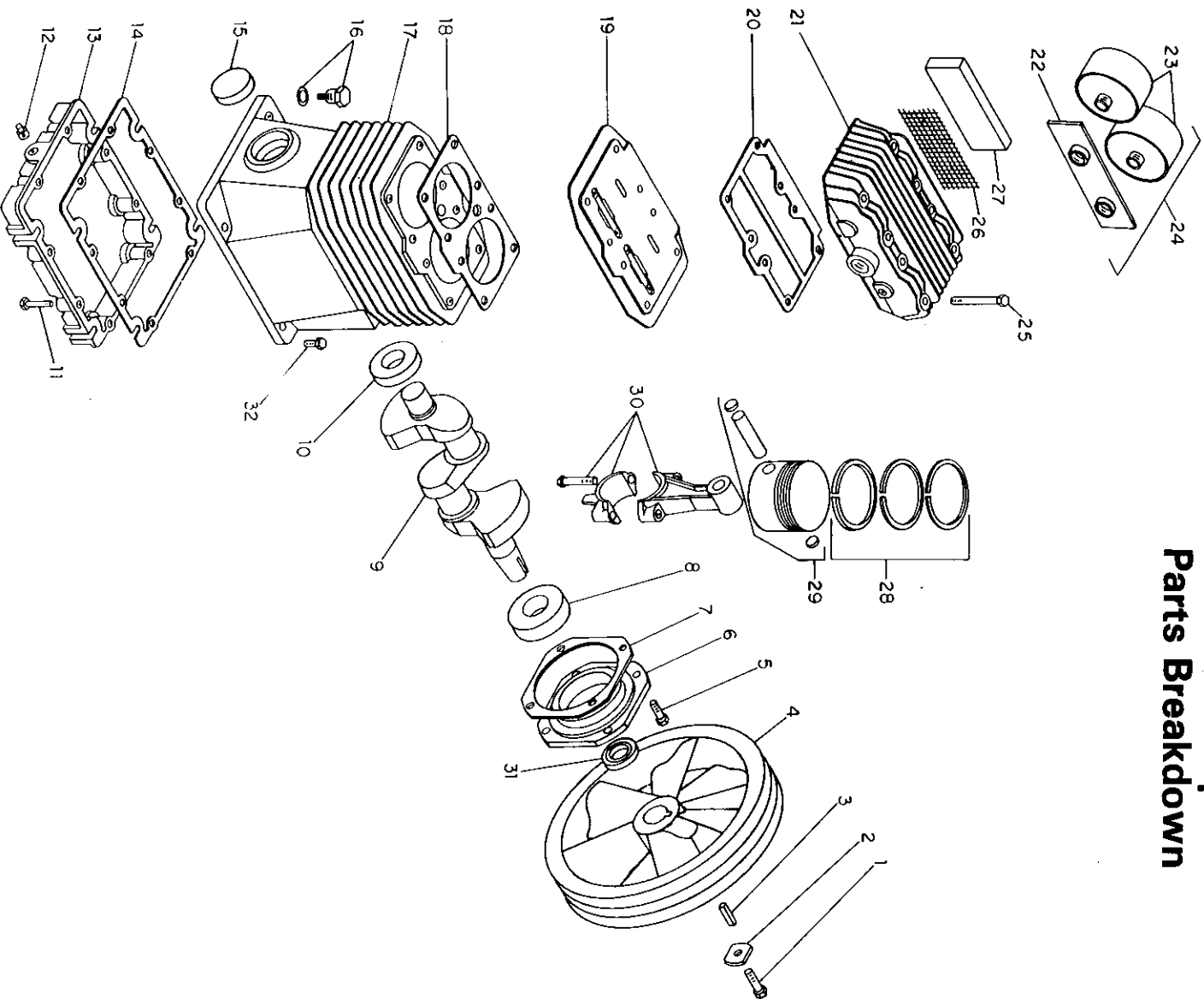
Read the operator's manual carefully before attempting to operate or service this unit! **FAILURE TO COMPLY WITH INSTRUCTIONS COULD RESULT IN: VOIDING OF YOUR WARRANTY, PERSONAL INJURY AND/OR PROPERTY DAMAGE!** These Air Compressors are precision built from the finest materials and with proper care and maintenance will perform efficiently.

165TG51 Series Tank Parts Breakdown



ITEM	PART NO.	DESCRIPTION	QTY.
90	093-0007	Grips	2
91	112-0037	Handle (left side)	1
92	112-0036	Handle (right side)	1
93	059-0011	Bolt 7/16" NC x 1 1/2" long	2
94	058-0056	7/16" lock washer	2
95	058-0005	Nut 7/16" NC	2
96	072-0001	1/2" petcock	2
97	061-0036	Machine screw No. 14 x 3/4" long	2
98	094-0009	Vibration pad	4
99	150-0010	8 gallon twin tank assembly w/handles & wheel	1
100	110-0008	Axle shaft 7/8" O.D.	1
101	095-0012	Wheel 10" x 2.75"	1
102	062-0002	Square head pipe plug 1/8"	1
103	070-0038	Unloader 90-120 PSI	2
106	068-0009	Male conn. 1/2" NPT x 1/2" tube	2
107	058-0016	Compression nut & sleeve 1/2"	2
108	059-0146	Bolt 9/16" NC x 2 1/2" long	4
109	145-0152	Discharge tube 1/2" x 13 1/2"	1
110	059-0010	Bolt 9/16" NC x 1 1/2" long	4
111	006-0055	Pulley 3 1/2" OD x 3/4" bore	1
112	061-0006	Key 3/16" sq x 1" long	1
113	146-0016	Engine mounting bracket	1
114	114-0017	Sensor tube 1/2" OD x 6" (Honda)	2
115	145-0139	Sensor tube 1/2" OD x 28" (Briggs)	1
116	068-0031	Male connector 1/2" NPT x 1/2" OD (Honda)	1
116	064-0040	90° elbow 1/2" NPT x 1/2" tube (Briggs)	2
117	090-0012	Air throttle (165TG51B-8)	2
118	090-0015	Air throttle (165TG51H-8)	1
119	103-0054	Tube clamp (Briggs)	1
123	061-0042	Screw No. 10 x 7/8" long (Briggs)	1
124	058-0078	Hex nut 9/16" - 18	2
125	060-0027	Shakeproof lock washer 3/8" ID	2
126	060-0055	Nut 1/2" NC	1
127	059-0045	Lock washer 1/2"	1
128	114-0101	Bolt 1/2" NC x 3/4" long	1
129	114-0103	Stabilizer bar (165TG51H-8)	1
129	114-0085	Stabilizer bar (165TG51B-8)	1
129	114-0102	Belt guard bracket (165TG51H-8)	1
130	061-0042	Belt guard bracket (165TG51B-8)	1
131	059-0012	Screw No. 10 x 3/8" tap	2
132	114-0006	Lock bolt 9/16" NC x 1 1/2" long	4
133	008-0022	Belt guard bracket	1
134	040-0104	Belt 5L-490 (165TG51H-8 only) (165TG51H-8)	1
	040-0090	165 compressor pump (165TG51B-8)	1
135	142-0062	Belt guard (165TG51B-8)	1
136	032-0024	Gauge 200 PSI w/outlet in back	1
137	028-0005	1/2" NPT cross	1
138	136-0005	150 PSI ASME pressure relief valve	1
139	065-0038	Pipe nipple 1/2" x 3"	1
140	064-0024	Street elbow 90° x 1/2"	1
141	065-0023	Nipple 1/2" x close	1
142	073-0011	Quarter turn valve	1
143	062-0016	Square head pipe plug 1/2"	1
144	025-0016	Engine 5 HP Briggs(165TG51B-8)	1
144	025-0010	Engine 5 HP Honda(165TG51H-8)	1
145	055-0013	Throttle spring (Honda)	1
146	063-0023	Bushing 1/2" x 8"	1
147	064-0003	Elbow 90°	1

165 Pump Parts Breakdown



COMPRESSOR PUMP REPLACEMENT PARTS			
ITEM	PART NO.	DESCRIPTION	QTY.
1	059-0002	Bolt 5/16" x 1" long	1
2	060-0053	Flywheel washer	1
3	146-0016	Key 3/16" x 1" long	1
4	044-0027	Flywheel O.D. B-width	1
5	059-0143	Bolt 9/16" x 7/16" long	4
6	045-0045	Bearing carrier assembly Includes items 6, 8 & 31	1
7	046-0149	Bearing carrier gasket	1
8	051-0043	Open bearing	1
9	053-0043	Crankshaft	1
10	051-0013	Open bearing	1
11	059-0145	Bolt 1/2" x 1 1/4" long	8
12	062-0002	Pipe plug 1/8" NPT	1
13	077-0065	Crankcase base	1
14	046-0150	Crankcase base gasket	1
15	062-0043	Expansion plug 1 3/4" diameter	1
16	056-0019	Dipstick w/o-ting	1
17	049-0035	Crankcase	1
18	046-0152	Cylinder gasket	1
19	043-0143	Valve plate assembly w/gaskets	1
20	046-0151	Head gasket	1
21	042-0068	Head	1
22	019-0096	Filter plate	1
23	019-0049	Filter canister w/element	2
24	019-0053	Replacement filter element (use inside P/N 019-0049)	2
25	019-0053	Complete filter assembly Includes items 22 & 23	1
26	059-0144	Bolt 9/16" x 2 1/2" long	8
27	118-0023	Filter screen (felt filtered models)	1
28	019-0052	Inlet filter (felt filtered models)	1
29	054-0112	Complete ring set (4 comp. rings & 2 oil rings)	1
30	048-0065	Piston assembly	2
31	047-0070	Connecting rod	1
32	046-0161	Oil seal	2
32	059-0146	Bolt 9/16" x 2 1/2" long	4

ASSEMBLIES - KITS - SETS

PART NO.	DESCRIPTION
040-0104	Complete pump assembly model 165 w/canister filters
040-0090	Complete pump assembly model 165 w/felt filter
165-0055	Complete overhaul kit (includes ring and gasket sets, valve plate assembly and filter element) (canister filtered models).
165-0083	Complete overhaul kit (includes ring and gasket sets, valve plate assembly and filter element) (felt filtered models).
046-0159	Complete gasket set