

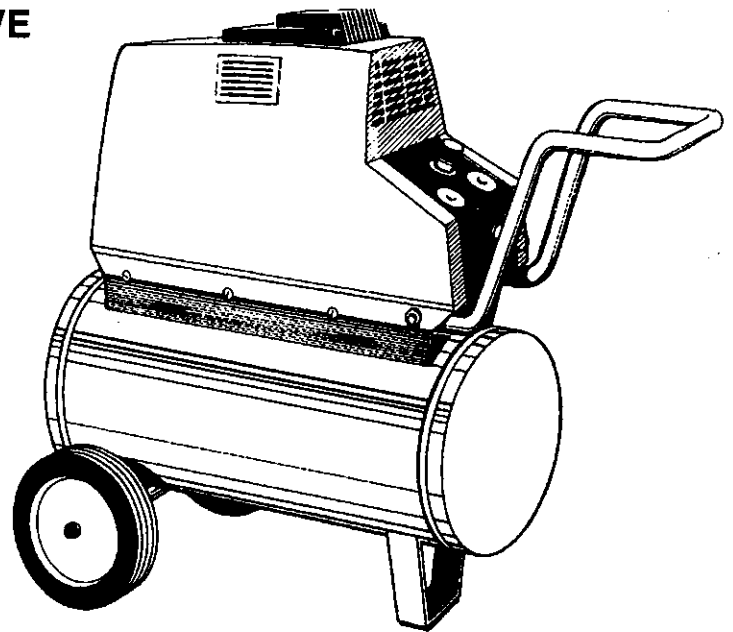
"F" SERIES 1 H.P. PORTABLE ELECTRIC OILLESS SINGLE STAGE DIRECT DRIVE

MODELS:

02F100

02FL100

02FC100



SPECIFICATION CHART

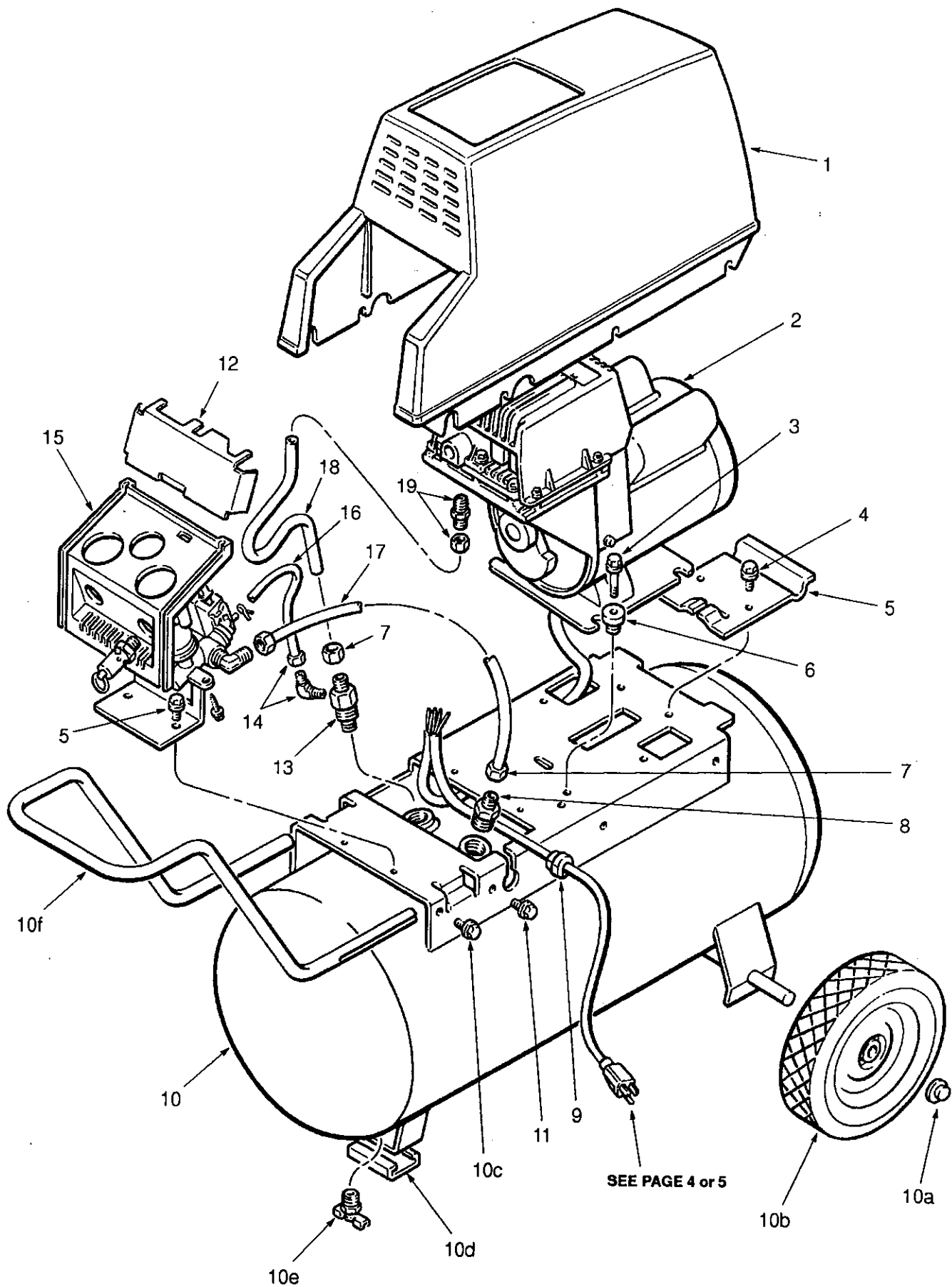
MODEL NO.	H.P.	AIR RECEIVER TANK CAPACITY GALLONS	VOLTAGE/ AMPS/ PHASE	CFM @ 40 PSI	CFM @ 90 PSI	APPROX. KICK-IN PRESSURE	APPROX. KICK-OUT PRESSURE
02F100-7.5	1	7.5	115 / 15 / 1	4.0	2.7	70	100
02FL100-7.5							
02FC100-7.5							

In the event you should have a question, or a concern, with the air compressor, **DO NOT** return it to the store where you purchased it. Most problems and concerns can be taken care of on the telephone!

Simply call (800) 544-5145 (Toll Free) and discuss the concern with our trained Customer Service Department. Should you not be able to reach us at the above number, please check the Service Center Listing included with your instruction manual and call the Service Center nearest you for assistance.

CAUTION: Read the operator's manual carefully before attempting to operate or service this unit! FAILURE TO COMPLY WITH INSTRUCTIONS COULD RESULT IN: VOIDING OF YOUR WARRANTY, PERSONAL INJURY AND / OR PROPERTY DAMAGE! This Air Compressor is precision built from the finest materials and with proper care and maintenance will perform efficiently.

PARTS DRAWING



PARTS LIST

"F" Series OILLESS

MODEL 02F100-7.5 includes items 1-21
1 HP with 7.5 gal portable non-code tank

"FL" Series OILLESS

MODEL 02FL100-7.5 includes items 1-21
1 HP with 7.5 gal portable non-code tank

"FC" Series OILLESS

MODEL 02FC100-7.5 includes items 1-21
1 HP with 7.5 gal portable non-code tank

ITEM	PART NO	DESCRIPTION	QTY	ITEM	PART NO	DESCRIPTION	QTY
1	142-0071	SHROUD	1	11	059-0215	SCREW, 1/4"-20 x 1/2" lg	6
2	040-0217	1 HP PUMP/MOTOR ASSY	1	12	056-0033	BAFFLE	1
		see page 6 & 7 for parts	1	13	031-0037	VALVE, check	1
3	059-0221	SCREW, shoulder, 1/4"-28 x 3/4"	2			1/2" NPT x 3/8" O.D. tube	1
4	059-0216	SCREW, 1/4"-20 x 1/2" lg	4	14	064-0003	ELBOW, 90° brass	1
		w/serrated washer	4	15	NA	MANIFOLD/SWITCH ASSY	
5	112-0048	HANDLE, platform	1			"F" or "FL" series	
6	093-0018	GROMMET	4			see pg. 4 for parts	or
7	058-0007	COMP. NUT & SLEEVE	2		NA	MANIFOLD/SWITCH ASSY	
8	068-0008	CONNECTOR	1			"FC" series, see page 5 for parts	1
		1/2" NPT x 3/8" O.D. tube	1	16	145-0188	TUBE, bleed (teflon) "FL" series	or
9	071-0008	BUSHING, strain relief	or		145-0180	TUBE, bleed (teflon) "FC" series	1
		"F" or "FL" series	or	17	145-0172	TUBE, manifold (nylon)	1
	071-0009	BUSHING, strain relief	1	18	145-0179	TUBE, transfer	or
		"FC" series	1		145-0222	TUBE, transfer, "FC" series only	1
10	150-0020	TANK ASSY, 7.5 gallon	1	19	068-0017	CONNECTOR, male	1
		includes items 10a-10f	1				
10a	033-0001	.HUB CAP	2				
10b	095-0010	.WHEEL, 8"	2				
10c	059-0216	.BOLT, 1/4"-20 x 1/2" lg	2				
		w/serrated washer	2				
10d	094-0015	.PAD, vibration	1				
10e	072-0001	.PETCOCK, 1/4" NPT	1				
10f	112-0049	.HANDLE	1				

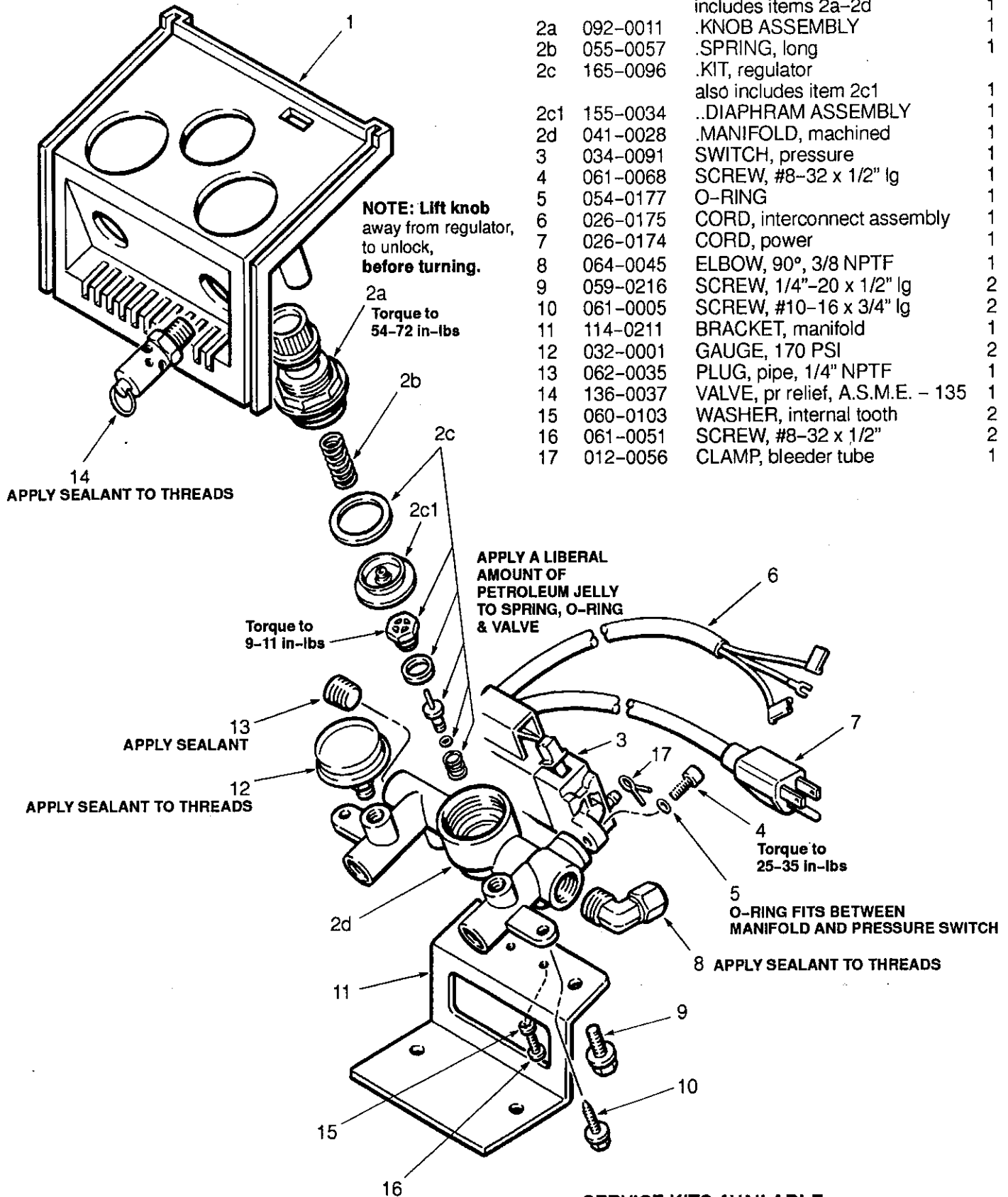
S 4/2-0031

OPTIONAL (not shown)

20	012-0005	HOSE, air, 1/4" NPT (m) x 15 ft black
21	038-0002	AIR CHUCK, 1/4" NPT (f)

PARTS DRAWING and LIST

"F" or "FL" MANIFOLD/SWITCH ASSEMBLY includes items 1-17



ITEM	PART NO	DESCRIPTION	QTY
1	077-0123	COVER, manifold	1
2	NA	REGULATOR/MANIFOLD ASSY	1
		includes items 2a-2d	1
2a	092-0011	.KNOB ASSEMBLY	1
2b	055-0057	.SPRING, long	1
2c	165-0096	.KIT, regulator	1
		also includes item 2c1	1
2c1	155-0034	..DIAPHRAM ASSEMBLY	1
2d	041-0028	.MANIFOLD, machined	1
3	034-0091	SWITCH, pressure	1
4	061-0068	SCREW, #8-32 x 1/2" lg	1
5	054-0177	O-RING	1
6	026-0175	CORD, interconnect assembly	1
7	026-0174	CORD, power	1
8	064-0045	ELBOW, 90°, 3/8 NPTF	1
9	059-0216	SCREW, 1/4"-20 x 1/2" lg	2
10	061-0005	SCREW, #10-16 x 3/4" lg	2
11	114-0211	BRACKET, manifold	1
12	032-0001	GAUGE, 170 PSI	2
13	062-0035	PLUG, pipe, 1/4" NPTF	2
14	136-0037	VALVE, pr relief, A.S.M.E. - 135	1
15	060-0103	WASHER, internal tooth	2
16	061-0051	SCREW, #8-32 x 1/2"	2
17	012-0056	CLAMP, bleeder tube	1

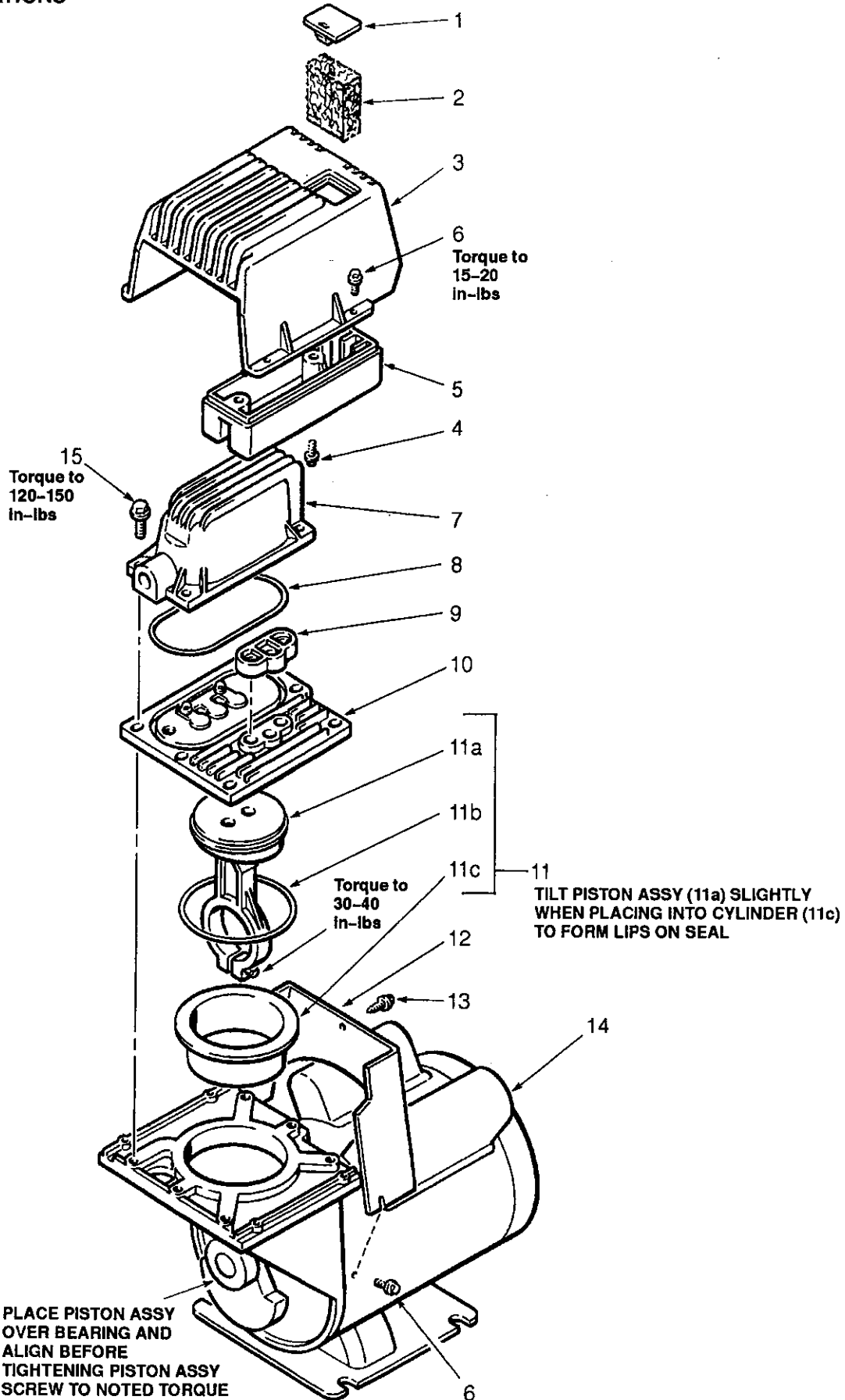
SERVICE KITS AVAILABLE

PART NO	DESCRIPTION
141-0158	OVERHAUL KIT
	includes items 2, 3, 5, 10, 12 & 14

PARTS DRAWING

PUMP SPECIFICATIONS

WEIGHT - 34 LBS
MAX RPM - 1750



PARTS LIST

PUMP/MOTOR ASSEMBLY 040-0217

1 H.P. "F", "FL" & "FC" Series OILLESS

includes items 1-15

ITEM	PART NO	DESCRIPTION	QTY
1	077-0118	COVER, filter	1
2	019-0152	FILTER, element	1
3	077-0117	COVER, pump	1
4	061-0060	SCREW, #8 -32 x 3/4" lg	2
5	019-0151	MANIFOLD, intake	1
6	061-0061	SCREW, #8 -32 x 3/8" lg	6
7	117-0009	MANIFOLD, exhaust	1
8	054-0157	O-RING, exhaust	1
9	046-0231	SEAL, intake	1
10	043-0151	VALVE PLATE ASSEMBLY	1
11	048-0074	PISTON & CYLINDER ASSEMBLY	1
		includes items 11a-11c	
11a	NA	.PISTON ASSEMBLY	
11b	054-0158	.O-RING, cylinder	1
11c	NA	.CYLINDER, hardened	1

ITEM	PART NO	DESCRIPTION	QTY
12	142-0077	DUCT, cooling	1
13	061-0069	SCREW, #10 tapping x 1/2" lg	1
14	NA	MOTOR ASSEMBLY	
		must be purchased as complete	
		Pump/Motor assembly	1
15	061-0062	SCREW, 1/4" - 20 x 1" lg	6

SERVICE KITS AVAILABLE

PART NO	DESCRIPTION
046-0234	SEAL KIT includes items 8, 9 & 11b